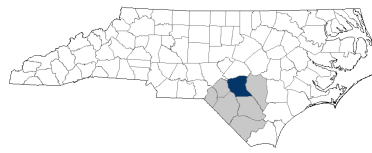


Cumberland County



Fayetteville-Lumberton Prosperity Zone Sub-Region
Peer County Type: Suburban
Local Education Agencies: 1
Charter Schools: 2

2030 NC Degree Attainment Goal: 2 million (67%)
2030 Proposed Cumberland County Attainment Goal: 49,125 (59%)

Population Spotlight

2010 Census: 319,431
 2020 Census: 334,728
 Change: 15,297

Growth Rate

4.8% County vs. **9.5%** State

\$49,160
 Median Household Income (2020)

24.6%
 Child Poverty Rate (2020)

90%
 Households with Broadband (2020)

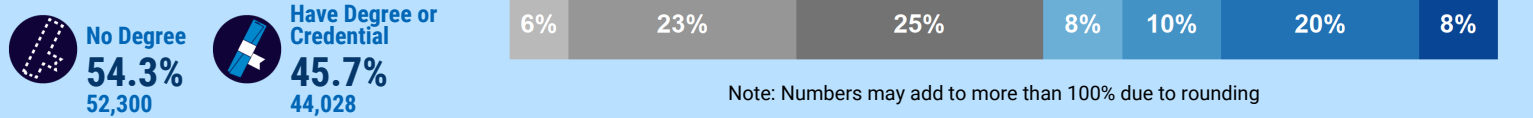
52%
 Home Owners (2020)

71%
 Voter Registration Rate (2021)

6.9%
 Unemployment Rate (2021)

Educational Attainment

Cumberland County residents ages 25-44, 2021



No Degree
54.3%
 52,300

Have Degree or Credential
45.7%
 44,028

Top Opportunities for Growth

These three areas represent the biggest opportunities for Cumberland County to improve future attainment outcomes.



Math Performance

22% of Cumberland County 3-8 graders earn college-and-career-ready scores in Math, below the suburban county average of 34%.



Postsecondary Completion

51% of Cumberland County high school graduates who enroll in postsecondary earn a degree or credential within 6 years, below the suburban county average of 60%.

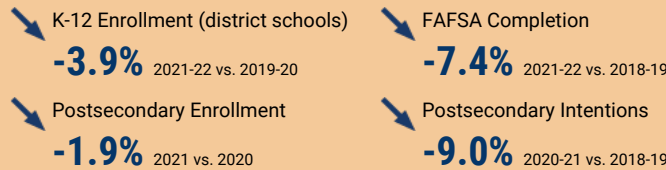


Adult Learners

26% of Cumberland County adults 25-44 have some college, no degree, above the suburban county average of 17%.

Impact of Covid-19 on Education Pipeline

Covid-19 has affected critical transition points along the education continuum.



Data Disruptions

- College-and-Career-Ready in Reading
- College-and-Career-Ready in Math
- Chronic Absenteeism



ncdemography.org

ACADEMIC READINESS

How students in Cumberland County traditional schools are currently doing:

To meet state goals, each year Cumberland County needs:

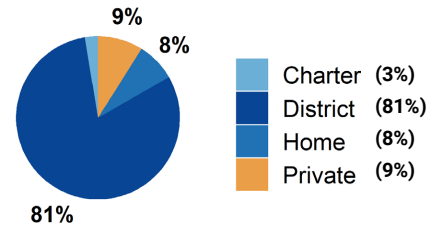
- **48%** of eligible 4-year-olds **enrolled in NC Pre-K program**; 837 more needed to meet state goal of **75%**. 2022
- **26%** of 3-8 graders are earning college-and-career-ready scores (level 4 or 5) in **reading**; 10,375 more needed to meet state goal of **73%**. 2022
- **22%** of 3-8 graders are earning college-and-career-ready scores (level 4 or 5) in **math**; 14,163 more needed to meet state goal of **86%**. 2022
- **84%** of 9th graders **graduate within four years**; 430 more needed to meet state goal of **95%**. 2021
- **32%** of students are **chronically absent from school**; 10,054 less needed to meet state goal of **11%**. 2021

Cumberland County has a **student-to-school counselor ratio** of 317:1 versus 336:1 in peer counties. 2021

School Choice

59,620 total students were enrolled in K-12 in Cumberland County in the 2021-22 school year.

Note: This profile focuses on outcomes of students enrolled in district schools.



Career and College Preparation

1,509 high school students took at least one **AP course (11%)** versus **15%** in peer counties (2021).

1,113 graduates participated in **Career & College Promise programs (33%)** versus **33%** in peer counties (2021).

Students in Cumberland County completed **1,934 Career & Technical Education concentrations** in 2021. The top three CTE concentrations completed include Law, Public Safety, Corrections, & Security; Human Services; and Health Science.

COLLEGE & CAREER ACCESS

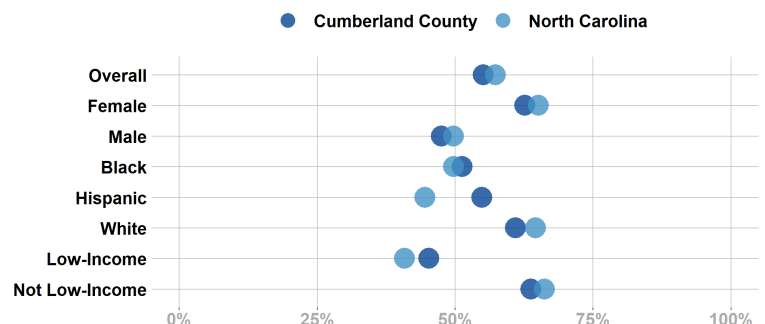
• **56%** of seniors **completed the FAFSA** in 2022; 737 more need to complete in 2022 to meet state goal of **80%**. 2022
<https://www.myfuturenc.org/ourwork/first-in-fafsa/>

• **69%** of graduates reported **intentions to enroll** in a postsecondary institution versus 75% in peer counties. 2021

• **53%** of graduates **enrolled in a postsecondary institution** within 12 months versus 55% in peer counties. 2021

52% of Cumberland County students have **parents with no college degree** (either 2- or 4-year) versus 49% in peer counties.

Postsecondary Enrollment Rates for Select Groups in Cumberland County, 2021



Note: Outcomes for demographic groups with fewer than 10 students are not displayed.

Success of Cumberland County High School Graduates

Top destinations of graduates, 2016-2020

- **49%** of college-goers attended a **public 4-year college**
 - **14%** of college-goers attended a **private 4-year college**
 - **36%** of college-goers attended a **public 2-year college**
 - **<5%** of college-goers attended a **private 2-year college**
 - **89%** of college-goers attended an **in-state college**
- **71%** of students who enroll **persist to their second year** versus 77% in peer counties. 2021
 - **51%** of students who enroll **earn a degree or credential** within 6 years versus 60% in peer counties. 2021

Adult Learners

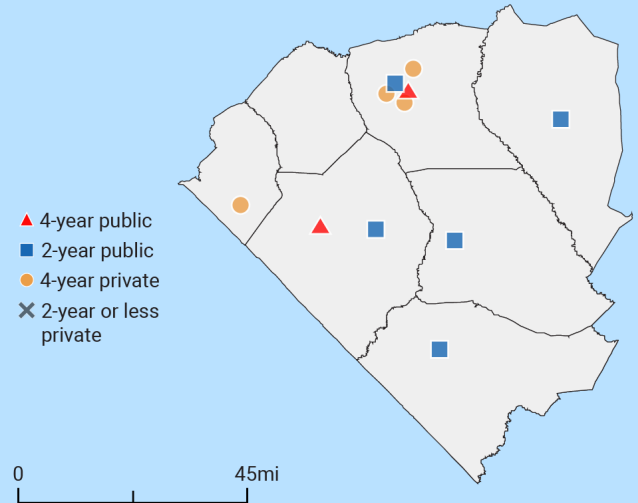
Cumberland County resident enrollments in NC Community Colleges, 2021

- 1,289** Basic Skills
- 4,423** Continuing Education
- 7,787** Curriculum



22% of Cumberland County residents have **student loan debt**; **12%** of debt holders had **student loans in default**. 2020

Postsecondary assets in Fayetteville-Lumberton Prosperity Zone sub-region



Degree Credentials Awarded, 2021

2,584 certificate | **3,044** associate | **2,900** bachelor's

In your Prosperity Zone Sub-Region:

80.4%

of postsecondary degrees and credentials conferred by regional institutions are **aligned with labor market needs**.

Top areas of misalignment:

- Transportation, Distribution & Logistics** (below bachelor's)
- Business Management & Administration** (bachelor's)
- Information Technology** (bachelor's)

1,855 Individuals served in an ApprenticeshipNC program in 2020

UNC and NC Community College Outcomes:

- 5,664** graduates in 2020
- 56%** of 2016 graduates were employed in NC in 2021
- \$38,415** annual average earnings of graduates employed in NC (includes both part-time and full-time jobs)

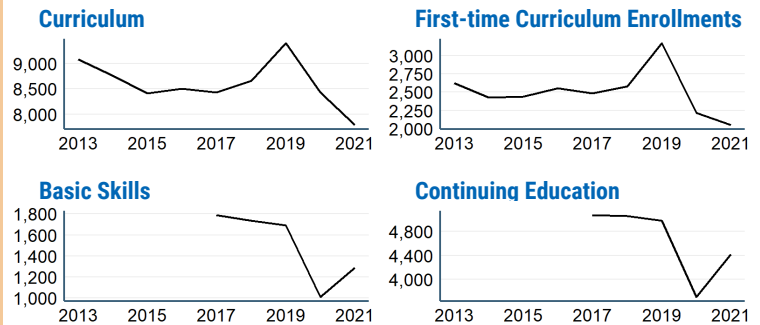
In 2021 your Workforce Development Board served:

- 10,138** in Basic Services
- 3,486** in Career Services
- 274** in Education Services

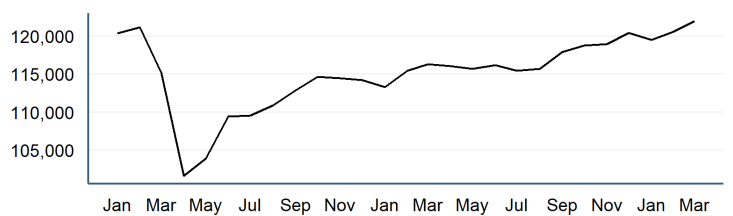


13.1% of young adults ages 16-24 in Cumberland County were **not working and not in school** versus **11.2%** in peer counties. 2019

Impact of Covid-19 on NC Community College Enrollment



Number of Cumberland County residents employed, January 2020 to March 2022



Promising Attainment Practices

The new **Promising Attainment Practices Database** is a curated, searchable, and filterable collection of about 250 county, region, and state-level initiatives and programs that directly address various components of the state's attainment challenge. The Database allows local and regional initiative leaders and other stakeholders to identify groups across the state who are developing or operating initiatives designed to boost attainment.

Follow link to discover how Cumberland County has been meeting local needs:

https://dashboard.myfuturenc.org/promising-attainment-practices/?wdt_search=Cumberland

For more information about each indicator, including data sources and methodology, visit:

dashboard.myfuturenc.org/county-data-and-resources/